



OPEN



OPEN



# OPEN



OPEN is a luxurious 40 story tower development, located in the up and coming neighborhood of San Francisco. Complemented by world-class amenities, you will enjoy of spectacular ocean and city views from every angle of the building.

This majestic retreat is the most desired location in Panama City. From the relaxing Sky Terrace located on the 22nd level you will be treated to a glittering panorama of the ocean, the city, and the bay.

San Francisco



OPEN



# amenities



## Your Harmonious amenities.

- Elegantly designed porte-cochere entrance with valet-parking
- Astonishing double height lobby with impeccable finishings and high-speed elevator
- Concierge staff offering a full arrange of services to cater your special needs
- Multi-level covered parking with personalized access control system
- 24 hr security services

# social area



## Pool Terrace

- Swimming pool
- Tanning pool
- Open air grill area with bar
- Kids playground
- Spa with sauna and massage room
- Multi-purpose double height ballroom

## Sky Terrace

- Roof top swimming pool
- Panoramic ocean and city Views
- Open air zen gardens
- Full size gym with astonishing views
- Open air terraces



OPEN



# the units



All of the apartments are loaded with all these special details...

- Floor to ceiling panoramic windows
- Spacious walking closets in all of our master suites
- Wide terraces located at the best thought spots
- Elegant floor to ceiling height
- Italian loft like kitchen
- Move-in-ready
- Fully equipped with high efficiency
- Frigidaire appliances (AC units, Kitchen, Laundry)
- Kitchen and Bathroom walls dressed in the most beautiful stones
- Visitors Bathroom



OPEN



bt  
baur & Lenz

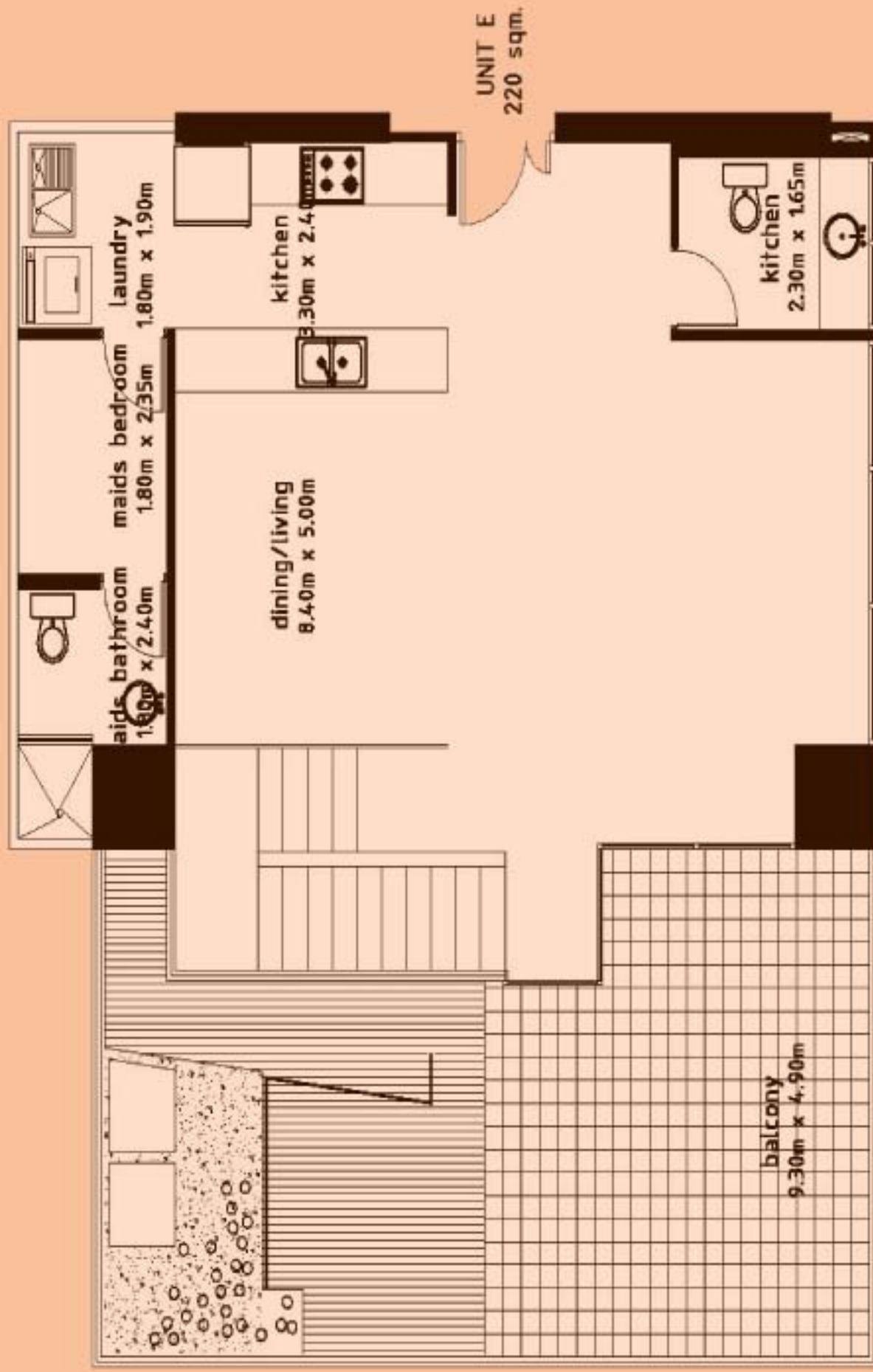


bt  
baur & Lenz



bt  
baur & Lenz





**FLOOR PLAN**

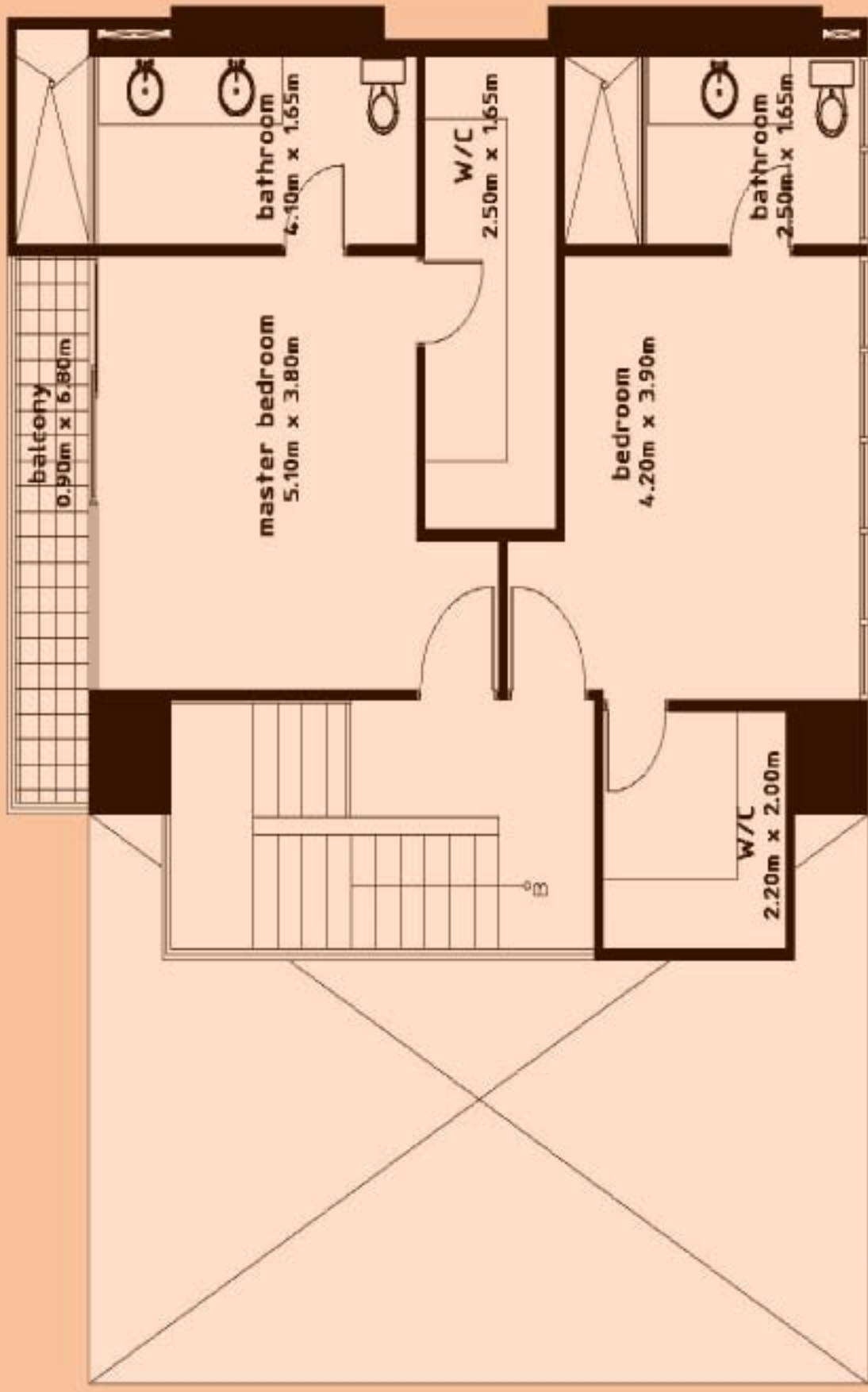
unit E, first floor

scale 1:100



OPEN

DUPLEX LOWER LEVEL



**FLOOR PLAN**

unit E, second floor  
 total area 220.9 sqm. - 2 bedroom, 2 1/2 baths, maids bedroom  
 scale 1/100



OPEN

DUPLEX HIGHER LEVEL



## FLOOR PLAN

scale 1:100

unit A  
living area 114 sqm. - balcony 36 sqm. - access hall 7.4 sqm. - total area 141.5 sqm. - 2 bedroom, 2 baths.



OPEN

Unit A



**UNIT B**  
136 sqm.

**FLOOR PLAN**

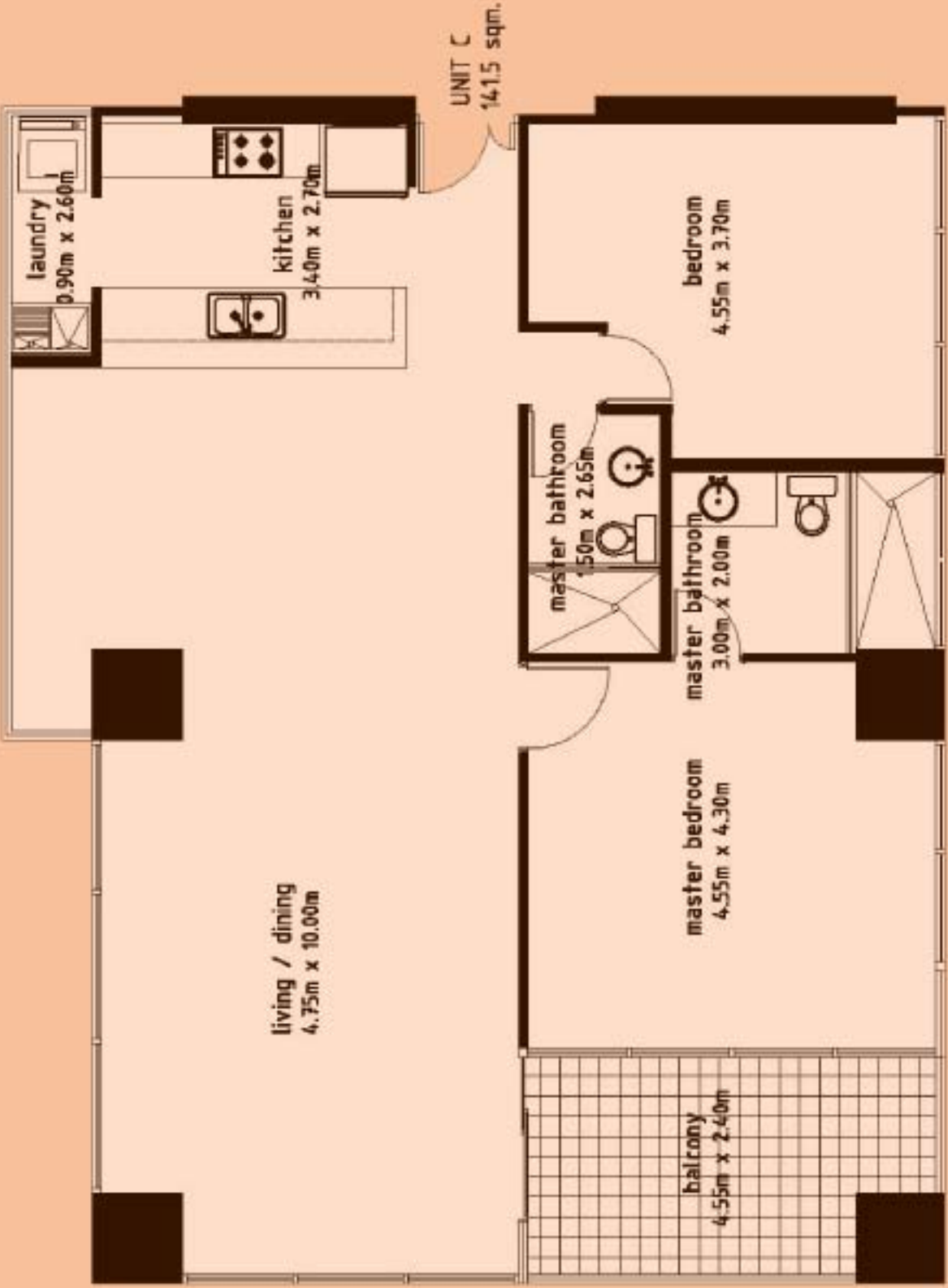
scale 1:100

unit B  
living area 105 sqm. - balcony 20 sqm. - access hall 4 sqm. - total area 136.5 sqm. - 1 bedroom, 1 1/2 baths.



OPEN

Unit B



**FLOOR PLAN**

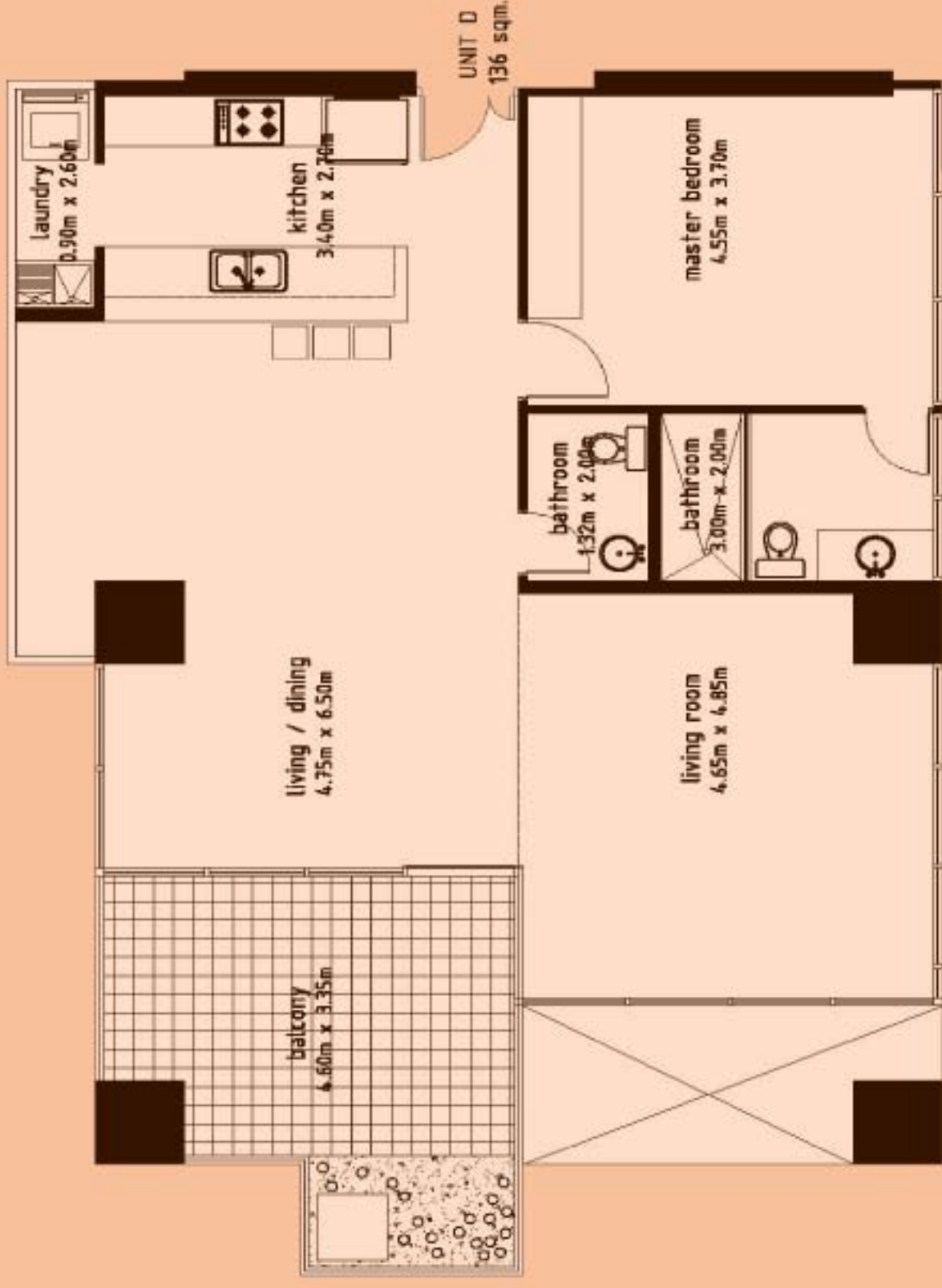
unit C  
scale 1:100

living area 11/4 sqm. - balcony 1/6 sqm. - access hall 7/4 sqm. - total area 14.15 sqm. - 2 bedroom, 2 baths.



OPEN

Unit C



**FLOOR PLAN**

unit D  
scale 1/100  
living area 105 sqm. - balcony 20 sqm. - access hall 4 sqm. - total area 136.5 sqm. - 1 bedroom, 1 1/2 baths.



OPEN

# CD views





OPEN



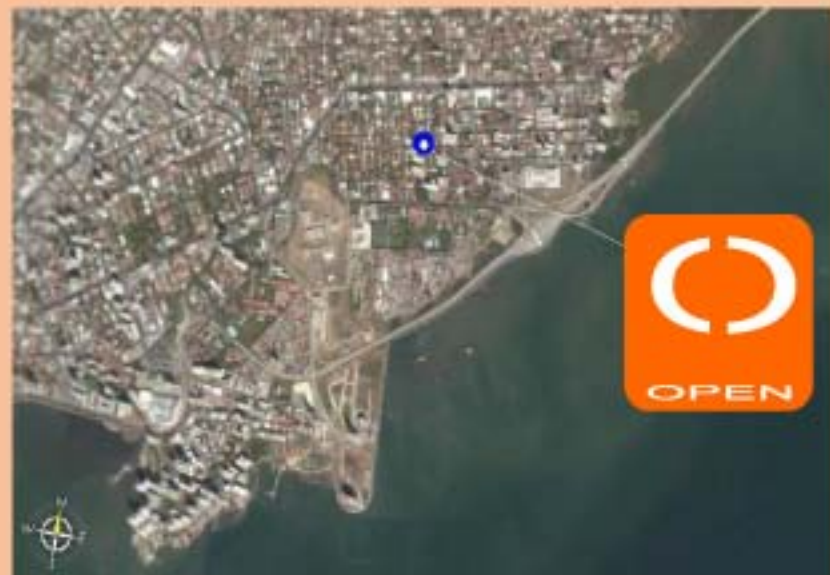


OPEN

## Location

San Francisco is the most up and coming neighborhood in Panama City. It is a peaceful residential location, surrounded by everything you could possibly imagine within walking distance. You enjoy from its high-rises of beautiful ocean and city views, being in the middle of the main roads and highways.

In OPEN you will be strategically located next to banks, restaurants, supermarkets, pharmacies, video clubs, not to mention being a few blocks away from the newest and most exclusive shopping mall "Multiplaza Pacific".





OPEN

## Why Panama?



PANAMA CANAL



NIGHT SKYLINE



CONTADORA ISLAND

Panama is one of the world's most visitor-friendly countries. It has the highest rating for tourist safety from the prestigious Pinkerton Intelligence Agency. Its people are warm, friendly and unspoiled. Panama has always been an international crossroad. Panamanians are accustomed to meeting people from other lands and English is our second language. If you are thinking of retirement, or simply having a vacation residence, don't hesitate to discover this hidden paradise.

### Climate

Wouldn't it be great to get away from those icy winters or sweltering summers to a place where the weather is perfect all year? Isn't that way everyone's heading to Florida?

Even at sea level in the rainy season, it is cooler than our U.S. summers. As we are above the haze and smoke level, the atmosphere is essentially pollution free. We have a 85 F weather all year long.

### International Transportation

Panama is the international "cross roads" of the western hemisphere. American, foreign and national airlines ply daily between major U.S. cities, central, South America and Europe. It is a 2-3 hour flight from Miami, New Orleans or Dallas.

### Currency

Don't worry about changing your money, as the good old American buck is standard throughout the country. ATM machines are available throughout the country if you open a local account. The way to transfer money is to have your pension deposited in a U.S. bank and then open a local account. You then deposit a personal U.S. check into your local account. It takes about 3 weeks to clear. Of course, there are other ways of legally transferring larger sums.

### Investment

Since the U.S. dollar is the basis of the Panama currency, it makes investing simple. Major U.S. and international banks are well represented. Investment in Panama can become very profitable. As the community grows, there is an increasing need for more lodging, stores, restaurants and tourist orientated services.

### Real Estate

Any foreigner can own a property in Panama, under the same laws as if you were a Panamanian citizen. You can do it under your personal name, or under an established corporation. For financing of the property, it is very similar to process used in the U.S. Since we have the dollar as national currency, you will get the same financing rates as you would in the States. Currently new properties have a 20 year exoneration period, were you don't have to pay any kind of property tax. This was established by the government as an incentive for national and foreign investments.

# the alliance

[www.PanamaRealEstateNOW.com](http://www.PanamaRealEstateNOW.com)  
Toll Free Phone: 1-866-775-9391



CONSORCIO GENERAL  
GRUPO INMOBILIARIO



## our projects

